



Snaproll II

Founder's Day Banquet - Sat, Feb. 5th, 2011

VOLUME 18 ISSUE 1

FEBRUARY, 2011

**INSIDE
THIS
ISSUE**

The newly appointed Commander of the Air Force Flight Test Center at Edwards Air Force Base will be our guest speaker at the Founder's Day Banquet. Brig. Gen Robert C. Nolan II was appointed in Oct. 2010, and heads the entire testing facility including the USAF Test Pilot School. General Nolan is a command pilot with more than 5,300 flight hours in 80 different aircraft types. He is a graduate of the Air Force Academy, and has a Master's Degree from the National War College.



The Flight Test Center workforce includes roughly 12,800 men and women, 25% of which are members of the military. In the last 60 years, Edwards has seen testing of every major weapons system in the Air Force arsenal plus many belonging to sister services. Current test programs include the F-22 Raptor, The F-35 Joint Strike Fighter (shown at left), and the RQ-4A Global Hawk Unmanned Combat Aerial System.



You can make reservations on our website or by calling (661) 654-9159. Cost is \$25 per person. The banquet will be held at Hodel's.

Left Seat	2
Photo page	3
IRA Roll-over Information	4
Membership Join or Renew	5
Board Election	6
Minter History	7
Raffle Winner	8

CALENDAR

February 2011

- 5- Founder's Day Banquet 6pm
Hodels, Bakersfield
- 19- Board Meeting
Museum

March 2011

- 19- Board Meeting
Museum

April 2011

- 16- Board Meeting
Museum

May 2011

- 14- 2011 Fly-In
Minter Field
- 21- Board Meeting

Fly-In Scheduled for Saturday, May 14th

The 2011 Minter Field Fly-In will be held on May 14th, with nearly 100 aircraft expected to fly-in to the field and be on display, including warbirds, L-birds, experimentals and antiques of all shapes and sizes.

The Museum will sponsor a \$5 pancake breakfast in the Museum hangar starting at 8am when the gates open for the Fly-In.

Admission to the Fly-In will again be \$10 per person, \$7 for Seniors and Veterans, \$5 for students 6-17, and Under 6 free.

Pilots may contact the Museum to reserve your ramp space. by e-mail at mfam@minterfieldairmuseum.com or by calling (661) 654-9159.

For more information, visit our website at www.MinterFieldAirMuseum.com.



14788V 5/Steamer: ETS, 1942. SN 75-5737. Photo by J.A. Detsch at Minter Fld. (Shutter: CAL/Asst: 17-2010)

The Left Seat by Jim Whitehead, COB



On behalf of the Minter Field Air Museum (MFAM) Board of Directors, I wish a Happy, Healthy and Prosperous 2011 to our members, associates and commercial supporters.

Year after year your MFAM has continued to evolve and grow to become a stronger community asset. Each year we are delighted to see old members loyally renew their memberships and new families join our Museum. That plus the dedicated volunteers that satisfies daily, weekly and special event needs plus become available on a short notice for group and personal museum visitations, are some of the main reasons for our continued growth.

As the number of visitations grows, so does the need for docents. Don Westfahl is our tea leader and can be reached through our Museum number of 661-654-9159. Don completed pilot training at Minter Field in 1944 and flew B-25s in the China Burma India CBI theater during WWII. Call and leave a message for Don. He will be happy to call you and talk about the many interesting people docents meet, and how you can train to be a docent.

A Board team will meet the week of Jan 25th to develop our Annual Plan. This plan is extracted from our 2011-2015 Five Year Strategic Plan. Both of these plans will be posted on our web page. In addition our Advisory Board will meet Feb 1st to continue our self evaluation utilizing the STEPS Program. One of the initial results will be a posting our Mission & Vision throughout the Museum.

A few of the upcoming events are; Founder's Day Banquet at Hodels on Feb 5th, Annual Fly-In on May 14th with the addition of a few warbirds, a spot landing contest and programs to be announced presented throughout the day after the pancake breakfast. We are very excited about partnering with the Kern County Museum for a military event at their location after the Veteran's Day parade on 11/11/11. Of course this will depend upon the status of the Kern County Museum. I do hope many of you are following the discussion on the status of this valuable county and state asset.

This year, the date of Veteran's Day is special! WWI ended at 1100 hours on the 11th day of the 11th month in 1918. So this year the event would be 11/11/11/11 adding 2011. How often will that occur!! Some how I don't think many of us really need to know.

Are you aware that Veteran's Day was previously known as Armistice Day? Visit our Museum and review the presentation on the name change and what is the significance of the red poppy. All this information is displayed on our new Museum History & Education Wall. This wall was created to educate the community on the history and importance of our military and national holidays.

Everything that the MFAM does would not happen if it wasn't for the Board Of Directors. These individuals volunteer their time to give back to the members, friends of the Museum and the community. The Board always welcomes ideas and suggestions.

**COME JOIN US AND HELP PROVIDE FAMILY FUN AND A SPECIAL
SERVICE TO THE COMMUNITY**

Museum Photos

New Chinese Stealth Jet Revealed



Museum Vehicles & Props Used for Movie Shoot



Museum Provides Jeeps & Uniforms—Gyro Stabilized Camera Used



Holiday Open House on Dec. 25th -- Don Westfahl Shares History

Important Tax Information

Tax Free IRA Distribtution for 2010 Possible Thru 1/31/2011



Donations from IRA Rollover Distributions:

If you are 70.5 years or older, a recently reinstated legislation makes it possible for you to make an individual retirement account (IRA) charitable rollover distribution to a 501c3 non-profit like the Minter Field Air Museum Inc. and have it excluded from your federal taxable income.

Distributions of up to \$100,000 to the Minter Field Air Museum in 2010 or 2011 by folks 70.5 years or older from traditional IRAs or Roth IRAs are excluded from gross income and count toward your required minimum distribution for the year.

Otherwise, these required distributions are taxable as income.

***Important to note you can make a transfer on or before January 31, 2011 and it can be treated as if it were made in 2010.**

We can also accept contributions in the form of stock, fine art, bonds etc.

Fortunately, some are making estate provisions in their wills and from insurance proceeds.

In any case, we encourage everyone to renew your annual participating membership. You may visit our website to renew:

www.MinterFieldAirMuseum.com

With your generous support, we will continue to provide all with a much better understanding of our history and the sacrifices made to ensure our freedom.

Contact your IRA administrator or your tax consultant for more details.

MEMBERSHIP– Join or Renew for 2011



MINTER FIELD AIR MUSEUM



2011 Membership Program

The support of our members allows the Museum to preserve the rich history of the San Joaquin Valley and educate the community on the important role played by Minter Field during WW II.

***Veterans receive 20% Discount on Pilot Level Annual Renewable Memberships**

<u>Member Recognition Level</u>	Newsletter & MFAM Pin	Warbird Cup	Warbird T-Shirt S M L XL XXL	MFAM Golf Shirt S M L XL XXL	Life Member – One-Time Fee	**Warbird Flt. in WWII Trainer	Leather Flight Jacket	Sponsor Plaque	*** VIP Status
Pilot (Basic Individual - \$40* Membership) Family - \$50* (Annual) Student (6-18) \$20	+		^	^					
Senior Pilot (Annual) \$100*	+	+							
Command Pilot (Annual) \$250*	+	+	+						
Squadron Commander (Life) \$500	+	+		+	+				
Wing Commander (Life) \$1,000	+	+		+	+				
Division Commander (Life) \$2,000	+	+		+	+	+			
Air Force Commander (Life) \$5,000	+	+		+	+	+	+	+	
Supreme Commander (Life) \$10,000	+	+		+	+	+	+	+	+

Your contribution is tax deductible – US Tax ID #953646320

***Warbird Flight in a WW II trainer*

****VIP Status receives 4 tickets to the annual Air Show or Fly-In with VIP Parking, 4 tickets to the Annual Founders Day Banquet in February.*



Name: _____ Phone: _____

Company: (if applicable) _____

Address: _____ City _____ St _____ Zip _____

E-Mail: _____ Spouse: _____

Membership Level: _____ #Members: _____

Payment: Check Enclosed _____ Total: _____ **OR** Charge to my Credit Card ->

Card # _____ Expiration Date: _____

Name on Card: _____ 3Digit Code on Back _____ Total _____

****Please Charge \$ _____ to my card for _____ month(s)****

Authorized Signature: _____

**Make Checks Payable to: Minter Field Air Museum
PO Box 445, Shafter, CA 93263**

E-mail: mfam@minterfieldairmuseum.com - Website: www.minterfieldairmuseum.com

Please Join Our Museum as an Active Member
OR
Renew Your Membership Now
Good thru 12/31/2011

The address we sent this Snap Roll to has a code after your name with the last year that you have paid membership dues.

A2011=paid for 2011; B2010= Last paid for 2010;
C2009= Last paid for 2009, etc; #Life=Lifetime Member

If you don't have a year code, then you have never joined the Museum as a supporting member. (X, Y, Z, V, etc). We cordially invite you to become a member and help enable the Museum to continue to grow.

If you have been a member, please renew your membership through the end of 2011. Recent Snap Rolls are available in color on our website: www.MinterFieldAirMuseum.com .

WE URGENTLY NEED YOUR SUPPORT !

Annual Board Seat Election Held Jan 15th. 2011

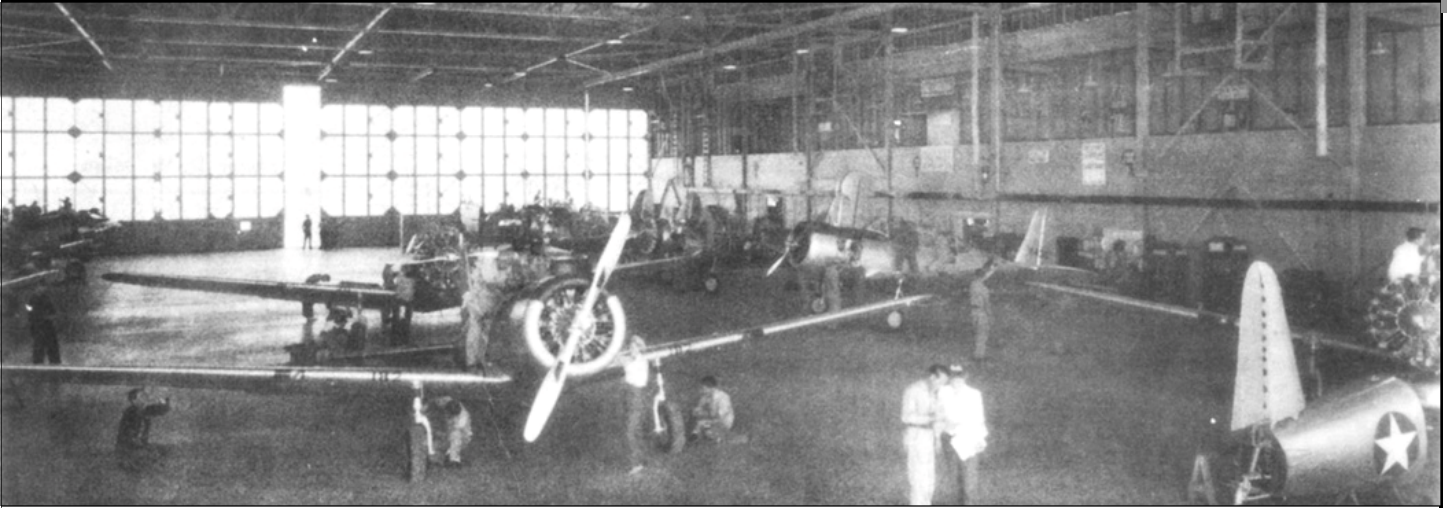
Each year at the first Board meeting of the year, elections are held for one-third of the board seats. All Museum members with current dues paid for 2011 were eligible to vote for board members. The Board has 12 seats, so the elections of board members was for the four seats in the rotation. The following Board members were renewed,

<u>Through</u>	<u>Board Member</u>
1/14	Scott Hogstad
1/14	Don Westfahl
1/14	Jim Whitehead
1/14	Ron Pierce

Following the board seat elections, the Board itself elected officers for the coming year.

The new officers are: Chairman-Jim Whitehead; Vice-Chairman- Dave Patterson; Secretary-Gary Ebel; Treasurer-Dean Craun.

Minter Field's 7th Sub Depot from June 30, 1943 Snap Roll



The Minter Seventh Sub-depot, under the direction of Lt. Col. Russell F. Flolo, was activated in November of 1941, and ranked among the most efficient of its kind. Manned almost entirely by civilian employees--45% women-- it supplied and maintained the BT-13s on the field. The aircraft ran through a production line and emerge with many more flying hours added to their careers.

In 1943, a P-39 met with a little difficulty while flying nearby, resulting in damage to the landing gear and right wing. Led by Stan Dow, crew chief, workmen at the depot repaired the ship in ten days, getting parts flown in from Sacramento.

As in the case of trainers stationed here permanently, the fighter craft was given the usual visual check, and was taken up for the flight test. Test pilots Lt. J. R. Goodrum and Lt. F. E. Peebles put the plane through its paces— stalls, spins, steep turns and all aerobatics which would test the durability of the plane in flight. It passed with flying colors.



Repaired P-37 Aircobra from September 8, 1943 Snap Roll

MINTER·FIELD
AIR MUSEUM

SHAFTER AIRPORT
401 VULTEE ST.
PO BOX 445
SHAFTER, CA 93263

Phone: 661-393-0291

Email:

MFAM@MinterFieldAirMuseum.com



We're on the Web

www.MinterFieldAirMuseum.com



Return Service Requested

Non-Profit Org
US Postage Paid
Bakersfield, CA
Permit 1128

Congratulations To Raffle Winner

MINTER·FIELD
AIR MUSEUM



**Congratulations
To Ricky Larson**
of Niceville, Florida

**WINNER OF OUR 2010
Centennial Raffle**

SPRINGFIELD 1911-A1 .45

**OUR THANKS TO VALLEY GUN, BAKERSFIELD, CA FOR THEIR
ASSISTANCE WITH OUR RAFFLE**

CHECK BACK HERE FOR OUR 2011 RAFFLE COMING SOON